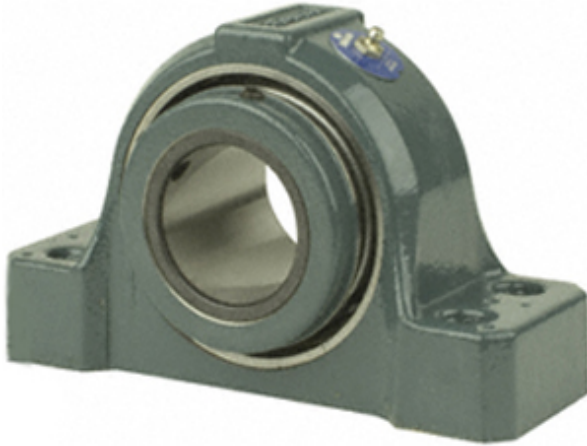




BEARING CORP.of CANADA LTD.



2.938 Inch | 74.625 Millimeter x 3.594 Inch |
 91.288 Millimeter x 3.25 Inch | 82.55 Millimeter
 Dodge P4B-S2-215RE Pillow Block Roller Bearing
 Units

Bearing No. P4B-S2-215RE

P4B-S2-215RE Bearing 2D drawings and 3D CAD models

Category	Pillow Block Bearings
Inventory	0.0
Manufacturer Name	ABB MOTORS AND MECHANICAL INC
Minimum Buy Quantity	N/A
Weight	9.788
EAN	0782475306190
Product Group	M06288
Number of Mounting Holes	4
Mounting Method	Concentric Collar
Housing Style	4 Bolt Pillow Block
Rolling Element	Spherical Roller Bearing
Housing Material	Cast Iron
Expansion / Non-expansion	Expansion
Mounting Bolts	5/8 Inch
Relubricatable	Yes
Insert Part Number	INS-S2-215R
Seals	Triple Lip Contact
Housing Configuration	1 Piece Solid
Inch - Metric	Inch
Other Features	Double Row Has Flinger With Set Screw
Long Description	4 Bolt Pillow Block; 2-15/16" Bore; 3-1/4" Base to Center Height;



BEARING CORP.of CANADA LTD.

	Concentric Collar Mount; Spherical Roller Bearing; 7-15/16" Minimum Bolt Spacing; 8-5/16" Bolt Spacing Maximum; Re
Category	Pillow Block
UNSPSC	31171511
Harmonized Tariff Code	8483.20.40.80
Noun	Bearing
Keyword String	Pillow Block
Manufacturer URL	http://www.dodge-pt.com
Manufacturer Item Number	P4B-S2-215RE
Manufacturer Internal Number	070386
Weight / LBS	21.56
d	2.938 Inch 74.625 Millimeter
B	3.25 Inch 82.55 Millimeter
Nominal Bolt Center to Center	8.1 Inch 206.4 Millimeter
Bolt Spacing Minimum	7.938 Inch 201.625Millimeter
Bolt Spacing Maximum	8.313 Inch 211.15Millimeter
D	3.594 Inch 91.288 Millimeter
Actual Bolt Center to Center	0 Inch 0Millimeter