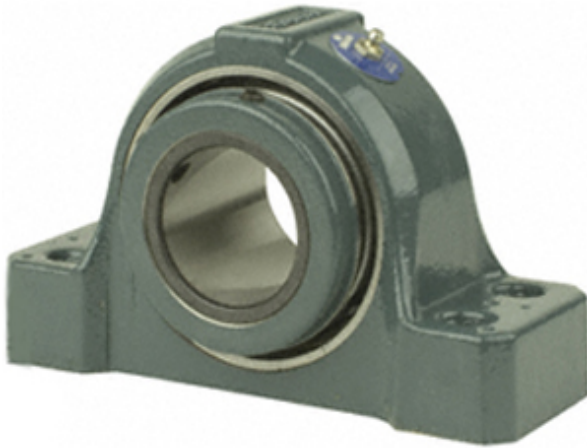




BEARING CORP.of CANADA LTD.

3.438 Inch | 87.325 Millimeter x 4.016 Inch | 102 Millimeter x 3.75 Inch | 95.25 Millimeter Dodge P4B-S2-307LE Pillow Block Roller Bearing Units



Bearing No. P4B-S2-307LE

P4B-S2-307LE Bearing 2D drawings and 3D CAD models

| | |
|---------------------------|--|
| Category | Pillow Block Bearings |
| Inventory | 0.0 |
| Manufacturer Name | ABB MOTORS AND MECHANICAL INC |
| Minimum Buy Quantity | N/A |
| Weight | 16.126 |
| EAN | 0782475306541 |
| Product Group | M06288 |
| Number of Mounting Holes | 4 |
| Mounting Method | Concentric Collar |
| Housing Style | 4 Bolt Pillow Block |
| Rolling Element | Spherical Roller Bearing |
| Housing Material | Cast Iron |
| Expansion / Non-expansion | Expansion |
| Mounting Bolts | 3/4 Inch |
| Relubricatable | Yes |
| Insert Part Number | INS-S2-307L |
| Seals | Metallic Labyrinth |
| Housing Configuration | 1 Piece Solid |
| Inch - Metric | Inch |
| Other Features | Double Row Has Flinger With Set Screw |
| Long Description | 4 Bolt Pillow Block; 3-7/16" Bore; 3-3/4" Base to Center Height; Concentric Collar Mount; Spherical Roller |



BEARING CORP.of CANADA LTD.

| | |
|-------------------------------|---|
| | Bearing; 9-3/8" Minimum Bolt Spacing; 10-5/8" Bolt Spacing Maximum; Relub |
| Category | Pillow Block |
| UNSPSC | 31171511 |
| Harmonized Tariff Code | 8483.20.40.80 |
| Noun | Bearing |
| Keyword String | Pillow Block |
| Manufacturer URL | http://www.dodge-pt.com |
| Manufacturer Item Number | P4B-S2-307LE |
| Manufacturer Internal Number | 070425 |
| Weight / LBS | 35.52 |
| Bolt Spacing Maximum | 10.625 Inch 269.875Millimeter |
| d | 3.438 Inch 87.325 Millimeter |
| Nominal Bolt Center to Center | 10 Inch 254 Millimeter |
| Actual Bolt Center to Center | 0 Inch 0Millimeter |
| Bolt Spacing Minimum | 9.375 Inch 238.125Millimeter |
| B | 3.75 Inch 95.25 Millimeter |
| D | 4.016 Inch 102 Millimeter |